

# 130-5200 Door Hold-Open



This door hold-open is designed for light to medium duty agricultural, construction or other equipment personnel doors that need to be held in an open position. Any application where it is desirable to hold or retain a hinged door in an open position.

## Global Locations:

**TriMark Corporation**  
500 Bailey Avenue  
P.O. Box 350  
New Hampton, Iowa 50659  
United States  
Tel: 641-394-3188  
Fax: 641-394-2392  
1-800-447-0343  
[www.trimarkcorp.com](http://www.trimarkcorp.com)

**TriMark Europe**  
Unit 3 Sence Court  
Bardon Hill  
Coalville  
Leicestershire LE67 1GZ  
United Kingdom  
Tel: +44(0)1530 512460  
Fax: +44(0)1530 512461  
[www.trimarkeu.com](http://www.trimarkeu.com)

**TriMark (Xuzhou)**  
Building A5 Jingwu Road  
Xuzhou Economic  
Development Zone  
Xuzhou, Jiangsu  
221004 PR China  
Tel: +86 516 8773 0018  
Fax: +86 516 8773 0058  
[www.trimarkcn.com](http://www.trimarkcn.com)



TriMark. Interactive. Product. Selector



TriMark



TriMark Corporation



TriMark Corporation

## FEATURES/BENEFITS:

- Simple, easy to use
- Rotating knob/pin latch
- Engineered to withstand vibration, shock, dust, dirt and moisture
- Ergonomic knob design
- Rotating knob allows for the door to be released from the open position from the ground level
- Durability in tough applications
- Easily adaptable to a wide variety of door/cab configurations

## AVAILABLE:

- Knob release pin latch or remote release version
- Single and two stage striker

## MATERIAL/FINISH:

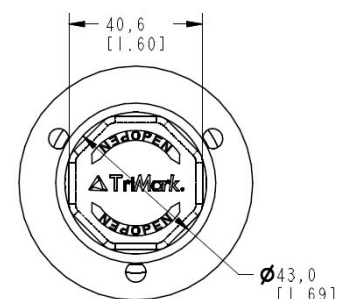
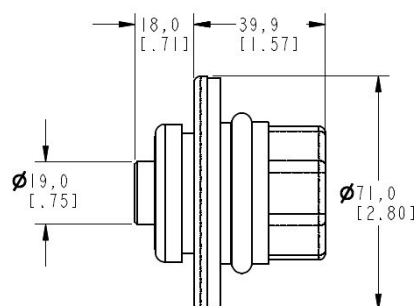
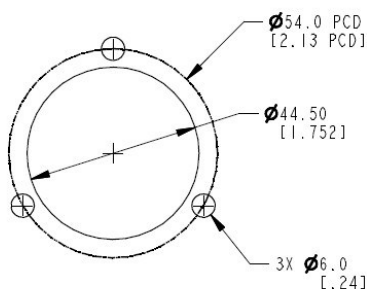
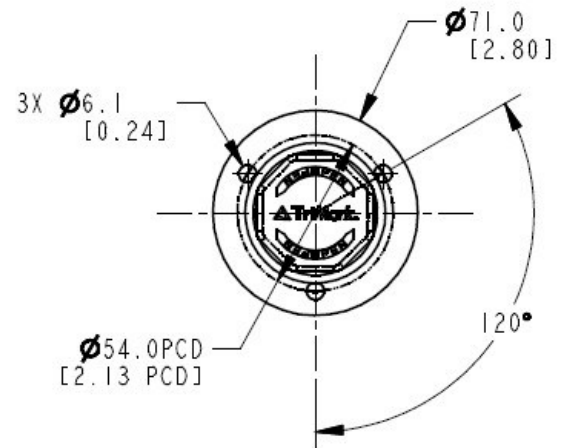
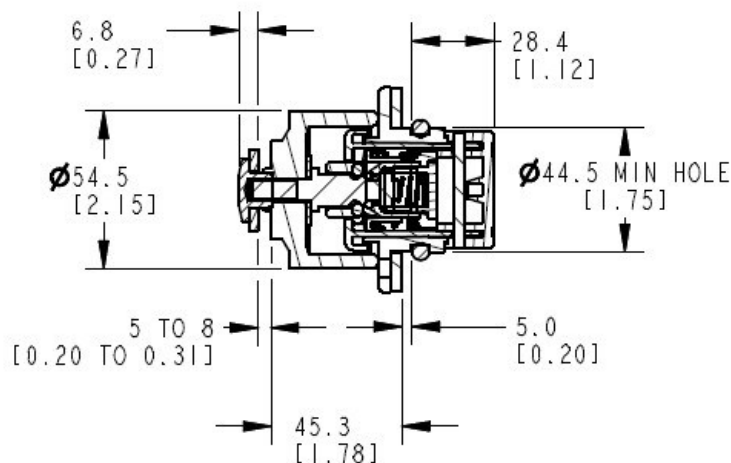
- Knob and flange: Glass reinforced nylon - black
- Stainless steel latching pin
- Internal components: 304 stainless steel
- Shroud: Thermoplastic Rubber
- Compression Springs; 304 Stainless Steel

## INSTALLATION:

- Easy to install, can be mounted on glass or steel doors
- (1) Shouldered hat nut and large rubber O-ring for glass mounting (included)
- Recommended mounting fastener torque on strike sub-assembly to be 6.7 to 7.9 N-m (59 to 70 in. lbs.)
- (3) 6mm x 54.5 pitch diameter circle for flange mounting on steel (fasteners not included)

Individual part dimensions are for reference only. Refer to individual part drawings for complete dimensions, specifications, and installation procedures. Engineering assistance and application drawings are available.

**Caution:** Door hold-open is not designed to secure a door in the closed position and does not comply with FMVSS 206 (ECE R11)



For more information visit  
[www.trimarkcorp.com](http://www.trimarkcorp.com)